

TFN


Modern Technology Testing Concept

RMP7

High Performance Optical Time Domain Reflectometer

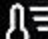


RMP

2024年01月08日 08:08 

08:08 am

2024年01月08日 星期一

 25°C



光时域反射仪



红光



光功率计



光链路分析



测距仪



端面检测



文件管理器



网页浏览器



网络工具



系统设置



升级更新

Independent plug-in module

Lightweight & Convenient

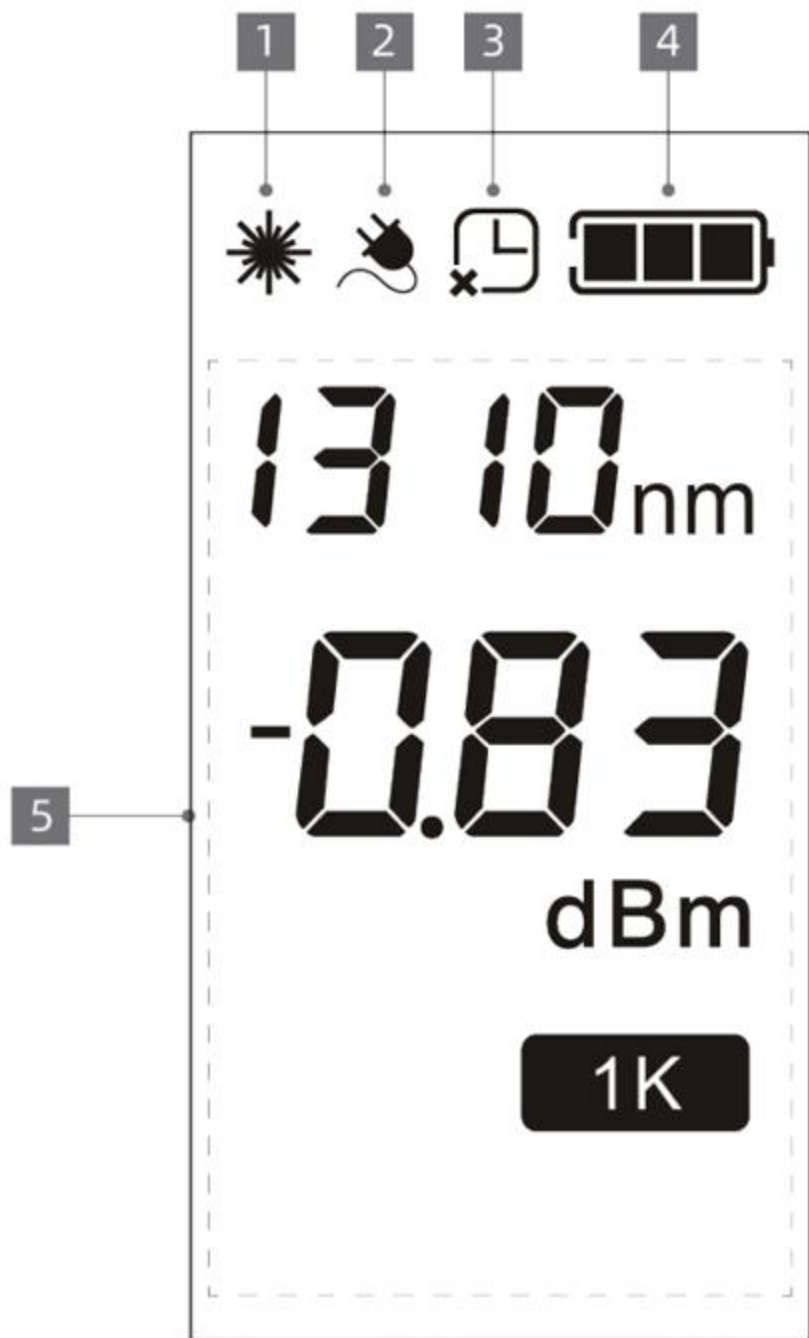


OPM/VFL accessories

Display instructions



- 1 OPM interface
- 2 VFL interface
- 3 Function keys
- 4 Type-C interface
- 5 Charging indicator



1 VFL icon

2 Power icon

3 Power saving function icon

4 Battery indicator icon

5 Optical power meter information area

Laser ranging accessories

Display instructions



1 Display

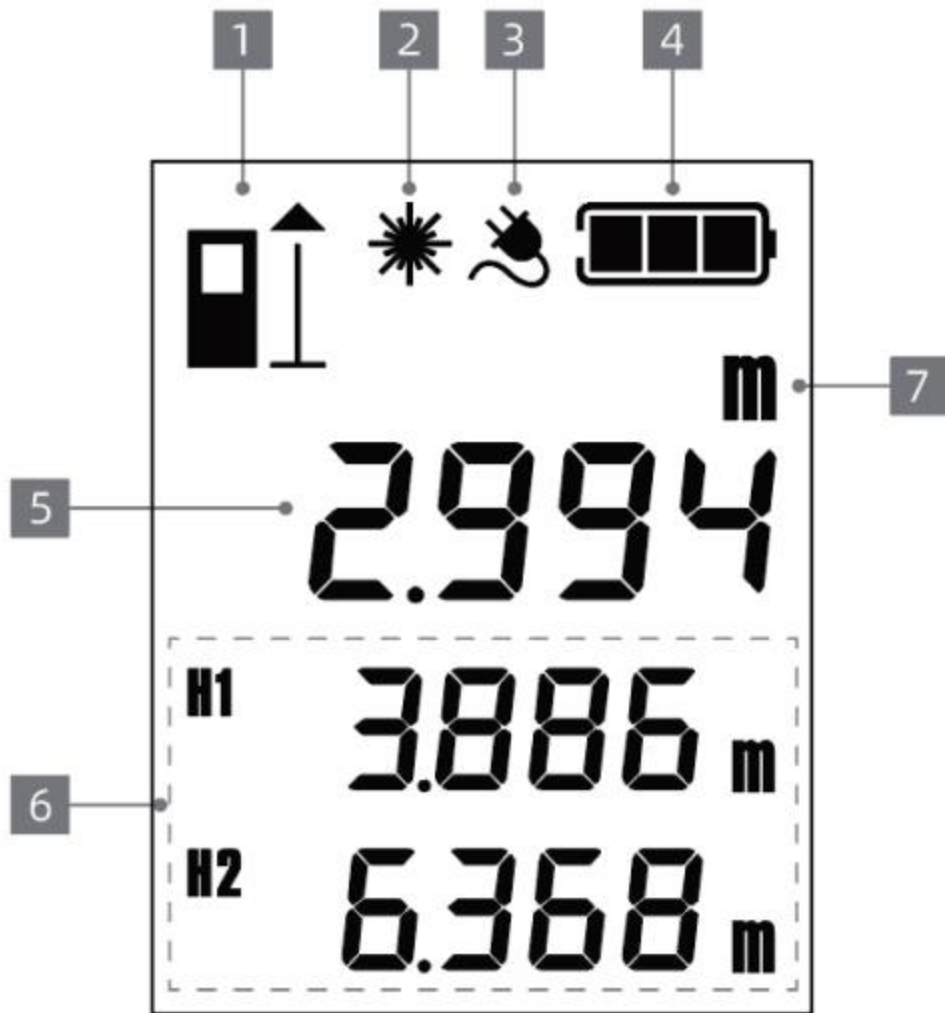
2 Function key

3 Laser emitting lens

4 Laser receiving lens

5 Type-C interface

6 Charging indicator



1 Measurement datum icon

2 Laser emission prompt icon

3 Power icon


4 Battery indicator icon

5 Current measurement data

6 Historical measurement data

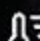
7 Units of measurement

Powerful functions Accurate testing

2024年01月08日 08:08 

08:08 am

2024年01月08日 星期一

 25°C



光时域反射仪



红光



光功率计



光链路分析



测距仪



端面检测



文件管理器



网页浏览器



网络工具



系统设



升级更新

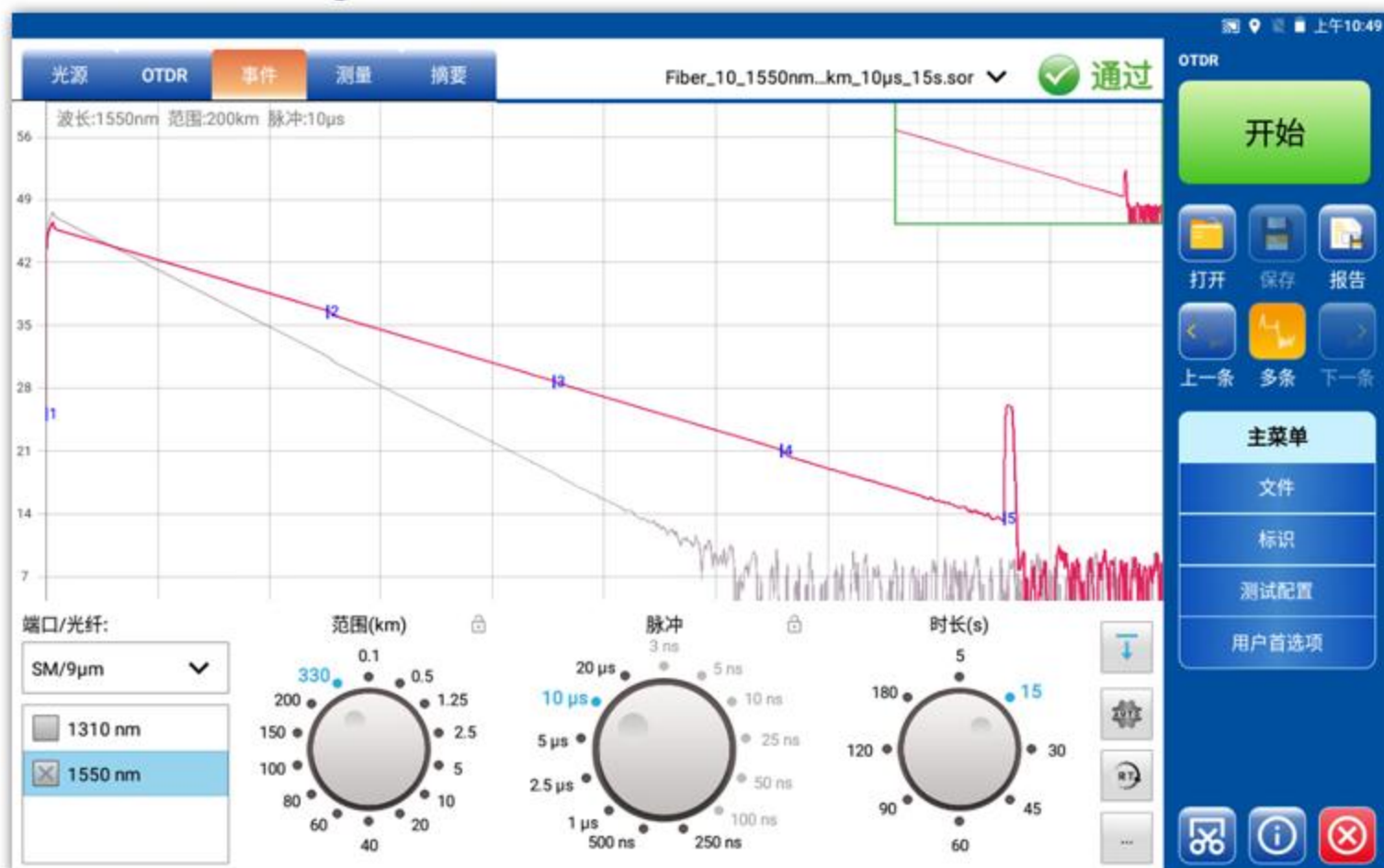
系统设置

升级更新

Display multiple functions Experience the charm of technology

OTDR Test

Accurately observe link events



A standard OTDR provides a view of the internal condition of the fiber and can also calculate fiber length, attenuation, total return loss at break, splice loss, connector loss and total loss.

Optical Power Test



After enabling OPM, when there is light, you can tap the "REF" button under settings to set the REF reference value of the current wavelength. Each wavelength has an independent REF setting value. Tap the "REF" button under the display to display the actual measured relative difference (dB) and the set new reference value.

Two Observation Modes



Ranging Function

The screenshot displays a ranging application interface. At the top left, the file name "#2024-03-05_01-52-21.txt" is shown. Below it, a vertical list of measurement distance buttons (9m to 1m) is visible, with the 1m button highlighted in green and displaying "1.816". The central display shows "距离: 1.816m". To the right, a vertical scale from 0 to 40m is shown, with a red laser line and a device icon at the bottom. The bottom right contains a menu with options like "测量", "打开", "保存", "清空", "主菜单", "单位切换", "前基准", and "后基准". A red box highlights the "单位切换" button. At the bottom, a warning message reads "测量时请保持机器与测量物体垂直".

#2024-03-05_01-52-21.txt

测量距离/m

9	-
8	-
7	-
6	-
5	-
4	-
3	-
2	1.815
1	1.816

距离: 1.816_m

Hardware V0.0.0.1

测量时请保持机器与测量物体垂直

测量

打开 保存 清空

主菜单

单位切换

前基准

后基准

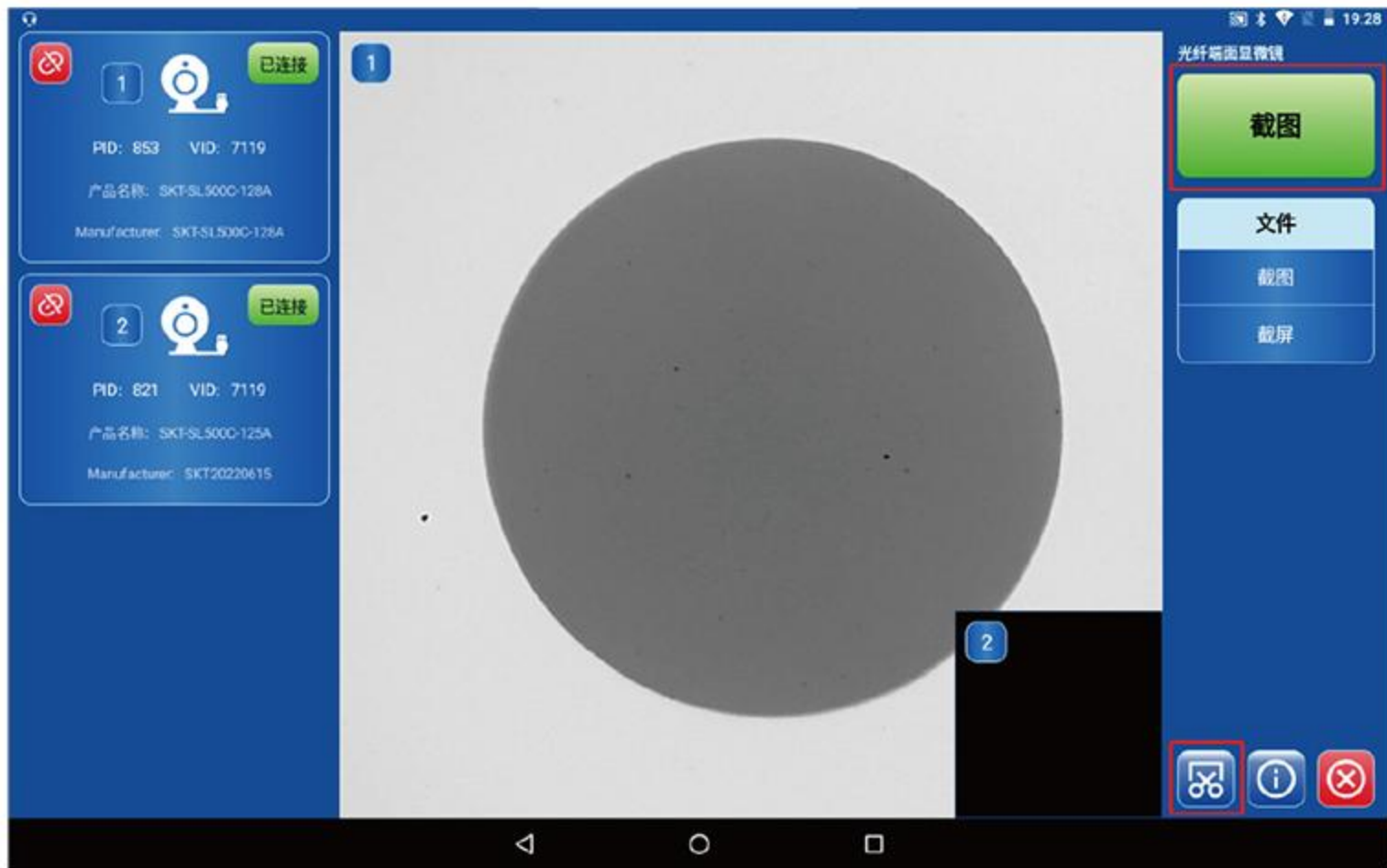
0 19(cm) 40(m)

0.03-40m Test range 0.03-40m

Event Map Function



End Face Inspection



Button display





1 OPM/VFL accessories

2 Laser ranging accessories

3 On/off button

4 OTDR port

5 10.1-inch display

6 USB interface

7 Headphone jack

8 RJ45 interface

9 SIM card interface

10 TF card interface

11 Power interface

Product parameters

TFN RM7 Series Datasheet

Model Name	RM7-S3	RM7-S4	RM7-S5	RM7-M1	RM7-C1	RM7-SM1
Wavelength(nm)	1310±20 1550±20	1310±20 1550±20	1310±20 1550±20	850±20 1300±20	1310±20 1550±20 1625±20	850±20 1300±20 1310±20 1550±20
Quantity of Optical Ports	1				2	
Interface End Face	UPC/APC				APC/APC	UPC/APC
Suitable Fiber	SM			MM	SM	SM/MM
Test Range(km)	0.1,0.5,1.25,2.5,5,10,20,40,60,80,100,150,200,330,customize					
Pulse Width(ns)	SM:3,5,10,25,50,100,250,500,1000,2500,5000,10000,20000					
	MM(850):5,10,25,50,100,250,500,1000					
	MM(1300):5,10,25,50,100,250,500,1000,5000					
Event Dead Zone (m)	0.6			1	0.6	
Attenuation Dead Zone (m)	2.5			4	2.5	2.5
Dynamic Range(dB)	42/40	45/43	▲ 50/48	26/32	44/42/40	26/32/40/38
Maximum Number of Sampling Points	256000					
Minimum Point Spacing (m)	0.04					
Measurement Time(s)	5,15,30,45,60,90,120,180,customize					
Linearity(dB/dB)	±0.05					
Loss Resolution (dB)	0.001					
Distance Uncertainty (m)	±(0.8+0.005%*distance+sampling resolution)					
Refractive Index Range	1.000000-2.000000					
Optical Light Source(OLS)	>5dBm, same as OTDR wavelength					
Light Source Adjustment	CW/270HZ/1KHZ/2KHZ/1KHZ+flash/2KHZ+flash					

OPM Parameters	
Response Wavelength	800~1700nm
Calibration Wavelength	850,980,1270,1300,1310,1490,1550,1577,1625,1650nm
Power Range	-50dBm~+30dBm
Connector	2.5mm universal
★Whether to Support Plugging and Unplugging	Support
VFL Parameters	
Wavelength	650±20nm
Modulation Mode	CW/Flash (About 2HZ)
Output Power	10mW
Optical Connector	2.5mm universal
★Whether to Support Plugging and Unplugging	Support
★Laser Rangefinder	
Measuring Range	0.03~40m
Resolution	0.01m
Accuracy	0.02m
Units of Measurement	m/ft
★Whether to Support Plugging and Unplugging	Support
Platform Parameters	
★Display	10.1 inch 1280*800 high brightness color TFT screen
Touch	Multi-touch capacitive touch screen

Interface	Business Interface	2 pcs, customized PCI-Ex1 interface
	USB	2 pcs, USB TypeAx2, USB TypeCx1
	TF Card Slot	1 pc
	▲NANO SIM Card Slot	1 pc
	3.5mm Headphone Jack	1 pc
	Ethernet Interface	1 pc, 10/100/1000BASE-T
	DC Power Interface	1 pc, 5.5/2.5mm, positive inside and negative outside
	Module Interface	2 pcs, USB TypeCx2
Power Supply	Charge	15V 2.67A
	Charging Time	5.5 hours
	★Operating Time	>15 hours
Data Storage	Internal Storage	16G
	External Storage	USB storage, TF card
	Supported formats	Write: sor, tor, pdf, png, csv; Read: sor, tor, pdf, png, csv
Wireless Technology	Cellular Network	FDD-LTE/TDD-LTE/WCDMA/TD-SCDMA/GSM/EDGE
	WIFI	2.5G+5G,802.11a/b/g/b/ac
	Bluetooth	BT4.2(BR/EDR+LE)
Positioning Technology		GPS/A-GPS/GLONASS/BD
Backlight Adjustment		Infinitely adjustable
Hibernate		15s/60s/5min/30min/never/5 levels adjustable
Automatic Shut-down		1-12hour/never/13 levels adjustable
Language		Simplified Chinese/English/Other languages can be customized
Dimensions		287mm*190mm*74mm
Weight		About 1861g (excluding OTDR business module)
Operating Temperature		-10℃~50℃
Storage Temperature		-20℃~70℃
Relative Humidity		<90%

Product display





TFA

