

TFN

GP200

OPTICAL CABLE CENSUS INSTRUMENT

INTELLIGENT MULTIFUNCTIONAL OPTICAL FIBER MEASURING INSTRUMENT





TOUCH SCREEN + BUTTON

Touch the key for double operation



LOW POWER MODE

Long working hours



REMOTE SENSING

Hundreds of kilometers sensing vibration



STRONG ENVIRONMENTAL ADAPTABILITY

Any situation is acceptable



HIGH RECOGNITION ACCURACY

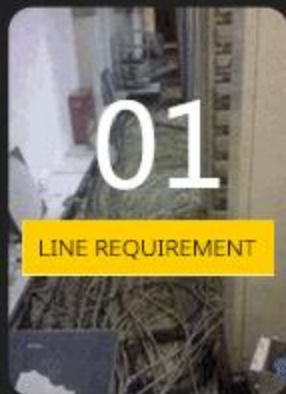
Nondestructive testing



AUTOMATIC OR MANUAL OPTIONS ARE OPTIONAL

Two modes of operation testing

PERFORMANCE ADVANTAGE



Small selectivity for the end of the line, PC, APC breakpoint, whether the end reflection can be tested



Cable search, line length test, line OTDR curve test



100km, single ended test, no ring required at the end



High accuracy, no crosstalk adjacent optical cable

HUNDRED-KILOMETER SENSING

HUNDREDS OF KILOMETERS OF REMOTE SENSING

MECHANICAL VIBRATION OF OPTICAL CABLE

1550nm

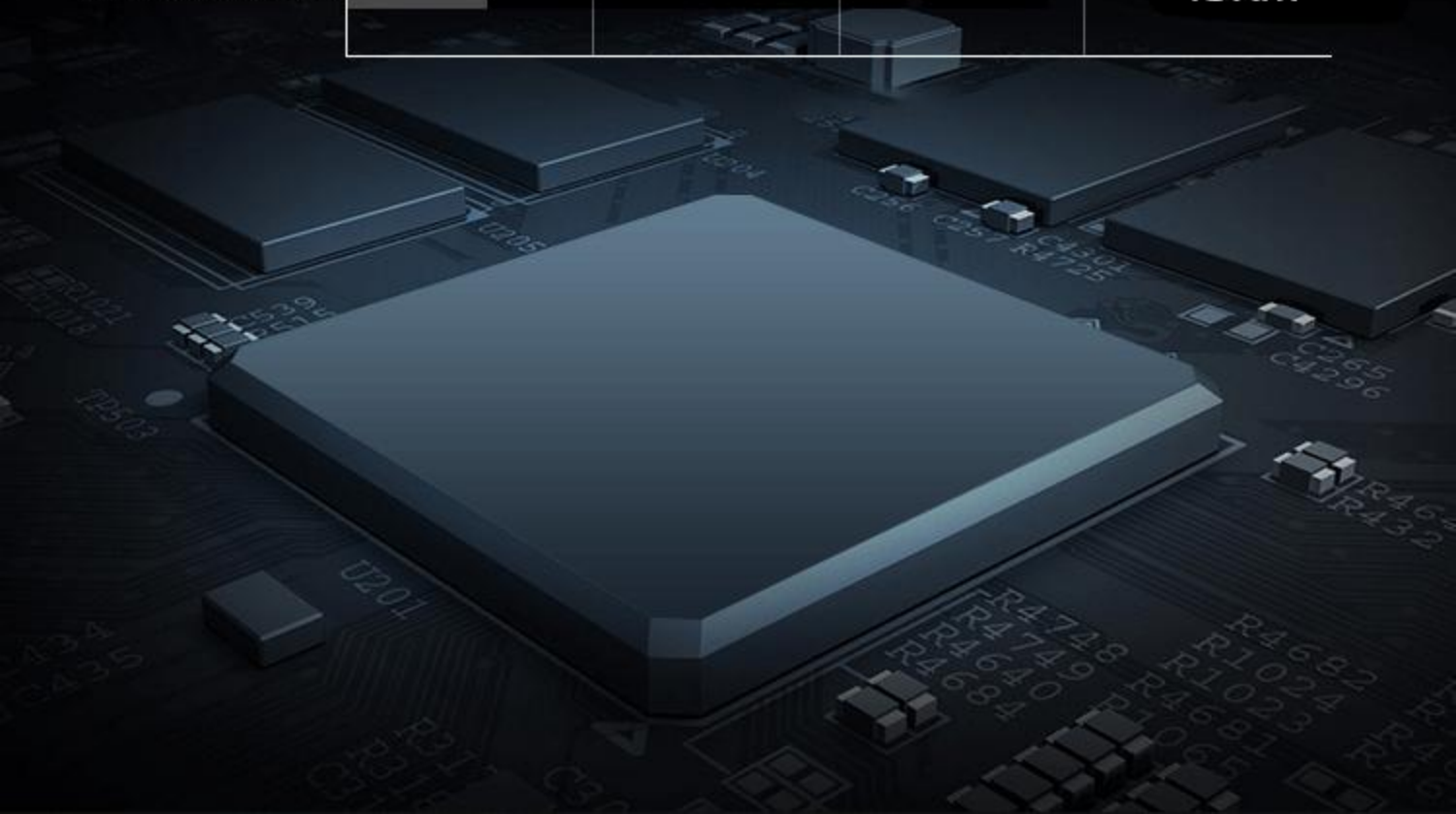
MECHANICAL VIBRATION
OF OPTICAL CABLE

$\geq 25\text{dB}$

SIGNAL TO NOISE RATIO

$< 6\text{W}$

POWER



TOUCH SCREEN LCD+ BUTTONS

TOUCH SCREEN + BUTTON DUAL OPERATION

5.6-INCH SCREEN



LARGE CAPACITY LITHIUM BATTERY

7.4V 1.4Ah

WORK MORE THAN 10 HOURS



Made in China

产品型号:

Model code:

序列号:

Serial number:

生产日期:

Production date:

TFN GP200



8401210100020186

2023.03.20

充电输入: DC12V/3A

Charging input:

体积: 150x235x66mm

Dimensions:



注意:
不可直视激光束, 避免光束直射。1类激光产品。
CAUTION:
VISIBLE LASER. AVOID EYE EXPOSURE. CLASS I LASER PRODUCT

CE FC

Combined Rayleigh scattering and digital data processing technology, strong adaptability to the line environment. The target cable can be found and identified in complex environments such as common broken cable lines or terminal APCs

LINE TEST REQUIREMENTS

GENERAL OPTICAL CABLE SURVEY INSTRUMENT

The cable is broken. No response to knocking. Cable end APC, or intermediate breakpoint, bend, end no reflection knock is also no sound

GP200 OPTICAL CABLE CENSUS INSTRUMENT

The cable is broken. No response to knocking. Cable end APC, or intermediate breakpoint, bend, end no reflection knock is also no sound

ACCURACY AND CROSSTALK ADVANTAGES

GENERAL OPTICAL CABLE SURVEY INSTRUMENT

The accuracy is low, the crosstalk between adjacent optical cables is serious, and the target optical cables cannot be distinguished

GP200 OPTICAL CABLE CENSUS INSTRUMENT

Adjacent optical cable without crosstalk, high accuracy

LONG RANGE MODEL ADVANTAGE

GENERAL OPTICAL CABLE SURVEY INSTRUMENT

A third worker is required to add reflectors to the end of the cable

GP200 OPTICAL CABLE CENSUS INSTRUMENT

No loopback is required and only two crew members are needed to find the cable

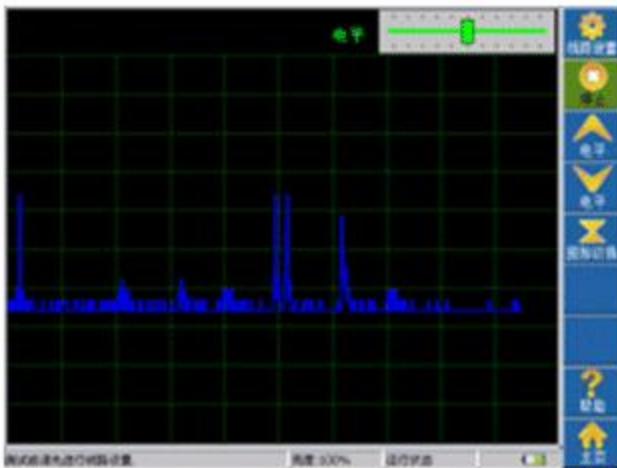


TAP

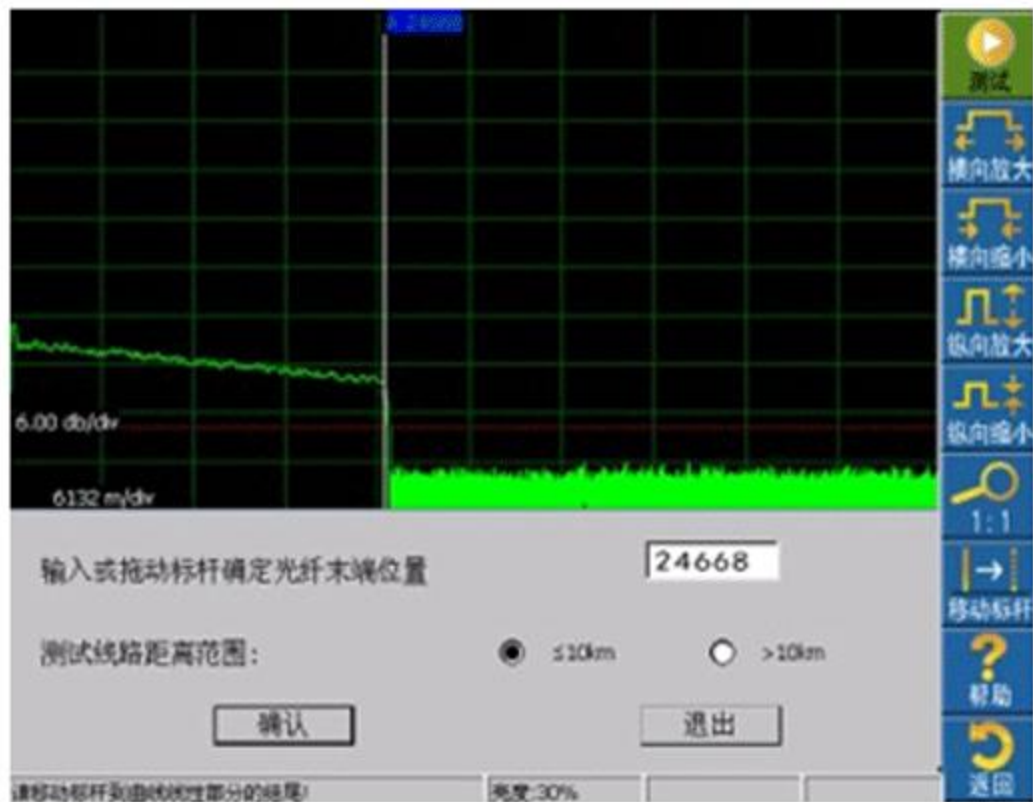


CLEAR VOICE

DISPLAY MODE ADVANTAGE



ECG WAVEFORM DISPLAY AND AMPLITUDE DISPLAY FREELY SWITCH



OTDR curve analysis, reflection, loss and length measurement · Assist in determining the fault point location of the cable

DETAIL PRESENTATION

PORTABLE DETACHABLE HANDLE

Refined woven handle, easy to carry anytime and anywhere



90° SUPPORT BRACKET

Strong support, stable and not easy to fall, can tilt 45°



IT COMES WITH A STYLUS

Small and portable, touch screen is more convenient



PRODUCT PARAMETER

OPTICAL CABLE CENSER			
MODEL NUMBER		GP200	
MEASUREMENT MODE		SINGLE FIBER TEST (NO LOOPBACK REQUIRED)	
OPERATING WAVELENGTH		1550nm±20nm	
TEST DISTANCE		40km	60 km
UNIDIRECTIONAL CABLE LOSS		14dB	24dB
OUTPUT MODE	REAL-TIME WAVEFORM DISPLAY	SUPPORT	SUPPORT
	REAL-TIME AUDIO PROMPT	SUPPORT	SUPPORT
INITIAL BLIND AREA		NO BLIND SPOTS	
SIGNAL-TO-NOISE RATIO		>10dB	
OPTICAL FIBER TYPE		SMF	
OPTICAL CONNECTORS		FC/APC	

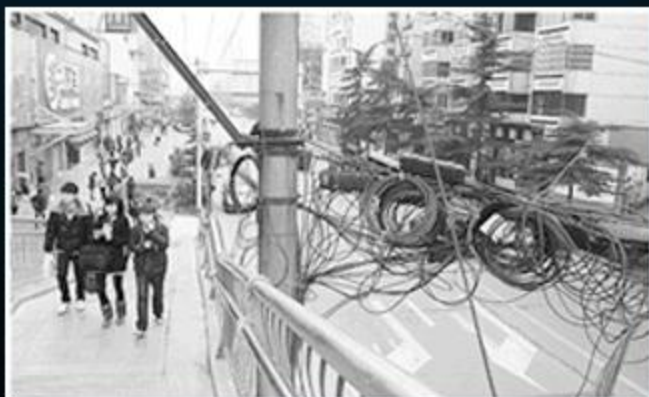
PRODUCT DESCRIPTION



APPLICABLE APPLICATION FIELD

Applications such as pipeline, tunnel, human well and overhead environment, according to the single optical fiber accurately identify the remote optical fiber.

It is used for the communication operator's computer room construction, line transformation, line maintenance, line rush repair, cable cutting, cable resources survey, duty maintenance, cable standard management





PRODUCT DISPLAY















Made in China

产品型号:
Model code:
序列号:
Serial number:
生产日期:
Production date:

TEN-GP200



8401210100020186

2023.07.01

充电输入: DC12V/3A
Charging input

体积: 150x235x66mm
Dimensions



注意:
不可直视光射流, 避免光束反射, 1类激光产品。

CAUTION

VISIBLE LASER, AVOID EYE EXPOSURE, CLASS I LASER PRODUCT

CE FCC

PRODUCT CONFIGURATION





- 11.Screwdriver set
- 12.Optical power meter