

FUSION WELDING

# TFN S3

## FIBER OPTIC FUSION SPLICER

FOUR MOTOR FULLY AUTOMATIC  
WELDING MACHINE



**4.3 INCH TOUCH  
SCREEN**  
QUALITY TYRE GLUE



**90 ° DUAL CAMERA**  
QUALITY TYRE GLUE



**500X FIBER CORE  
AMPLIFICATION**  
QUALITY TYRE GLUE



**EFFICIENT HEAT-  
ING FUSION WEL-  
DING**  
QUALITY TYRE GLUE

# APPLICABLE TO MULTIPLE PROJECTS

Meeting the needs of different projects



50KM main line



urban line



Security monitoring



Community installation  
and maintenance

# REAL TIME OPERATION WITH A 4.3-INCH TOUCH SCREEN UNDER CONTROL

Touch  
Display  
•••

Fiber core magnified by 500 times,  
fusion parameters clearly visible



Dual  
operation mode  
DUAL OPERATION MODE



Sensitive buttons  
SENSITIVE KEY



# FULLY AUTOMATIC ADVANCE WELDING, IMPROVE WORK EFFICIENCY

Advance  
Fusion welding



Four motors for high-speed and precise core alignment, achieving low loss fusion welding





7<sub>s</sub>

s

**WELD TIME**

WELDING TIME

18<sub>s</sub>

s

**HEATING TIME**

HEATING TIME

# V-SHAPED HEATING TANK FOR FAST HEATING IN 18 SECONDS

Fast  
Heating  
•••

10-900S optional, typical heating time 18S



# RUBBER PROTECTIVE SLEEVE PREVENT FALLING AROUND WITHOUT DAMAGING THE MACHINE

All around  
Fall prevention  
•••

Material upgrade, buffering external forces  
without damaging the machine



# THREE IN ONE FIXTURES MEET VARIOUS ENGINEERING TYPES

Three in one  
Fixture  
•••

Can connect leather wires, jumpers,  
and pigtails



flex



pigtail



Bare fiber



# LARGE CAPACITY LITHIUM BATTERY WITH EXTENDED BATTERY LIFE

High-capacity  
Lithium battery



5200mAh ultra large capacity lithium battery, capable of connecting up to 240 cells



# HIGH STRENGTH BODY WITH STRONG ADAPTABILITY TO THE ENVIRONMENT

Adapt  
Environment  
•••

Rain/dust/seismic and fall resistant

**WATERPROOF  
BODY**



**DUST AND  
DIRT RESISTANT**



**SEISMIC AND  
ANTI FALL**



# HIGH POWER LED WHITE LIGHT NIGHT QUESTIONING OPERAT- ION IS MORE WORRY FREE

High-power  
White light

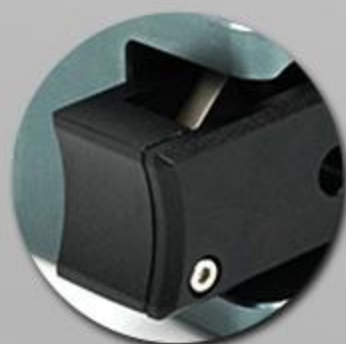
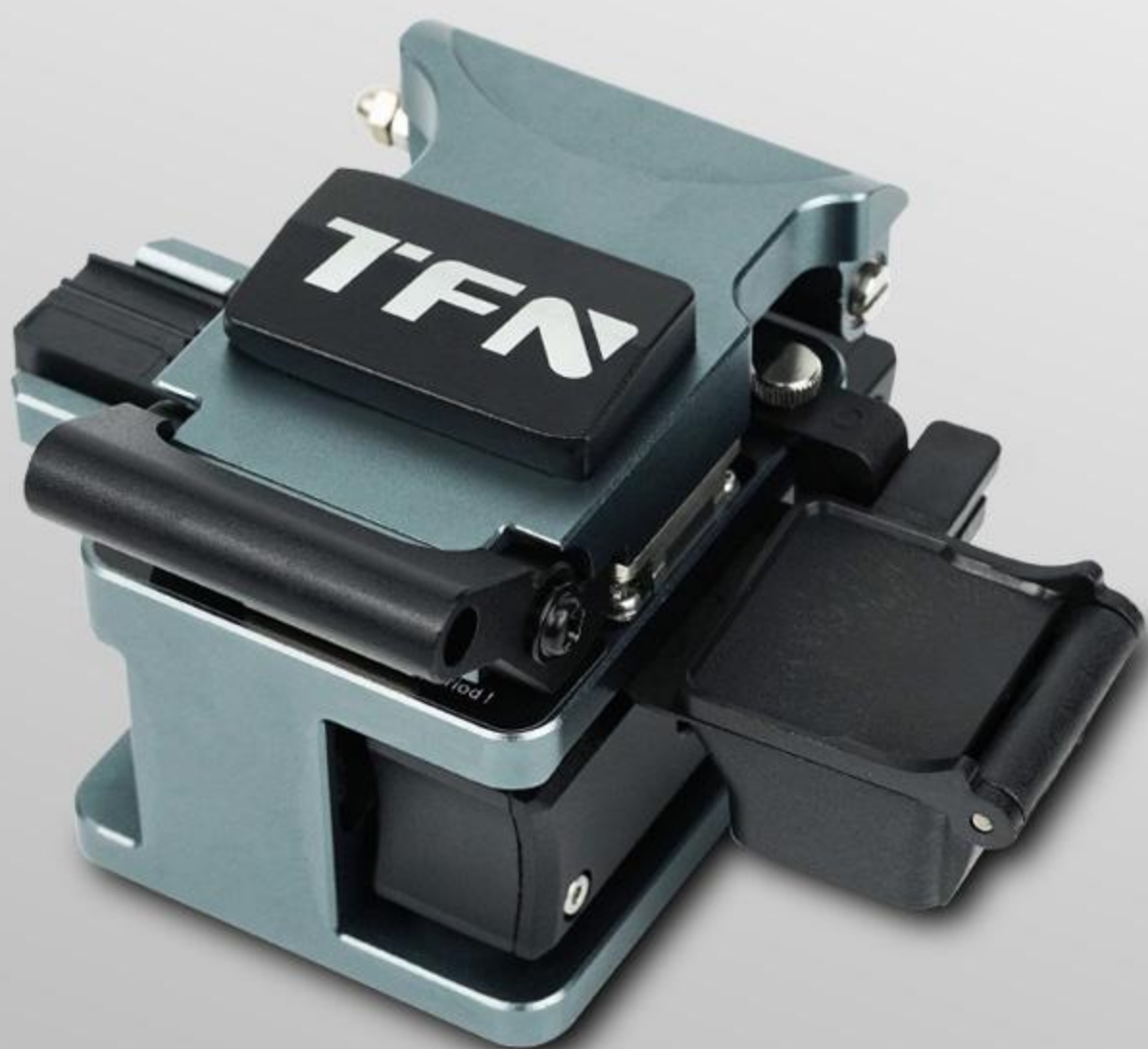
Built in three high-power white lights  
for high-definition focusing



# HIGH PRECISION FIBER OPTIC CUTTING KNIFE SIGNIFICANTLY IMPROVE EFFICIENCY

Adapt  
Environment  
•••

Once successful, no rework required



Automatic  
tool return



Three in  
one fixture



Imported  
blade

# PRODUCT SPECIFICATION PARAMETERS

Specifications  
Parameter



Let you further understand the  
machine performance

Average loss of fusion welding	SM(0.02dB)/MM(0.01dB)/DS(0.04dB) /NZDS(0.04dB)/G657(0.02dB)
Return loss	>60dB
Welding time	SM standard fusion time 7S/SM, SM FAST mode: 6S electrode rod life
Electrode rod life	Discharge 5000 times
Applicable fiber type	SM(ITU-TU.625), MM(ITU-TG.653), NZDS(ITU-T.655), G657A, G657B 0.25mm,0.9mm,2.0mm,2.4mm,3.0mm,FLAT(indoorcable)
Fiber placement and cutting angle	Coating layer: 0.125-1mm/ Cut length: 8-16mm
Fiber alignment method	Core alignment, same core alignment
Suitable heat shrink tubing for heaters	40mm,60mm,SOC-3.0.SOC-0.9
Typical heating time	20s, 10-900s Optional/High precision mode 7 seconds
Fusion mode	Preset 41 welding modes, can store 100 modes
Storage of welding results	Internal storage of 2000 up-to-date records
Number of battery fusion and heating cycles	Typical number of times is 240 (welding + heating)
Observation and display methods	Dual camera, 4.3-inch color HD LCD display
Fiber optic amplification and display	X, Y, X/Y, double click 380X
Power supply	Ac 100-240V input or DC 9-14V

# PRODUCT DISPLAY IMAGES

Compact model, easy to carry











