



High Precision Fiber Cutting Knife

Three-in-one fixture/Imported blade/Anti-breaking fiber/High quality aluminum



T1 (blue)

T1 (black)



AVIATION ALUMINIUM

High Quality Aviation Aluminum

Corrosion resistance & Oxidation resistance

It adopts imported CNC machining with high precision.
Anodic oxidation, not easy to fade.

High
Quality
Material
Selection

Strong
and
Durable

Texture
Heavy



FIBER BREAKAGE PREVENTION

Anti-broken Fiber Technology

Long-term Use and Continuous Fiber

Refined processing and manufacturing of stainless steel pressure pad, new upgrade of anti-broken fiber technology, solve the problem of cold and easy-to-break fiber technology

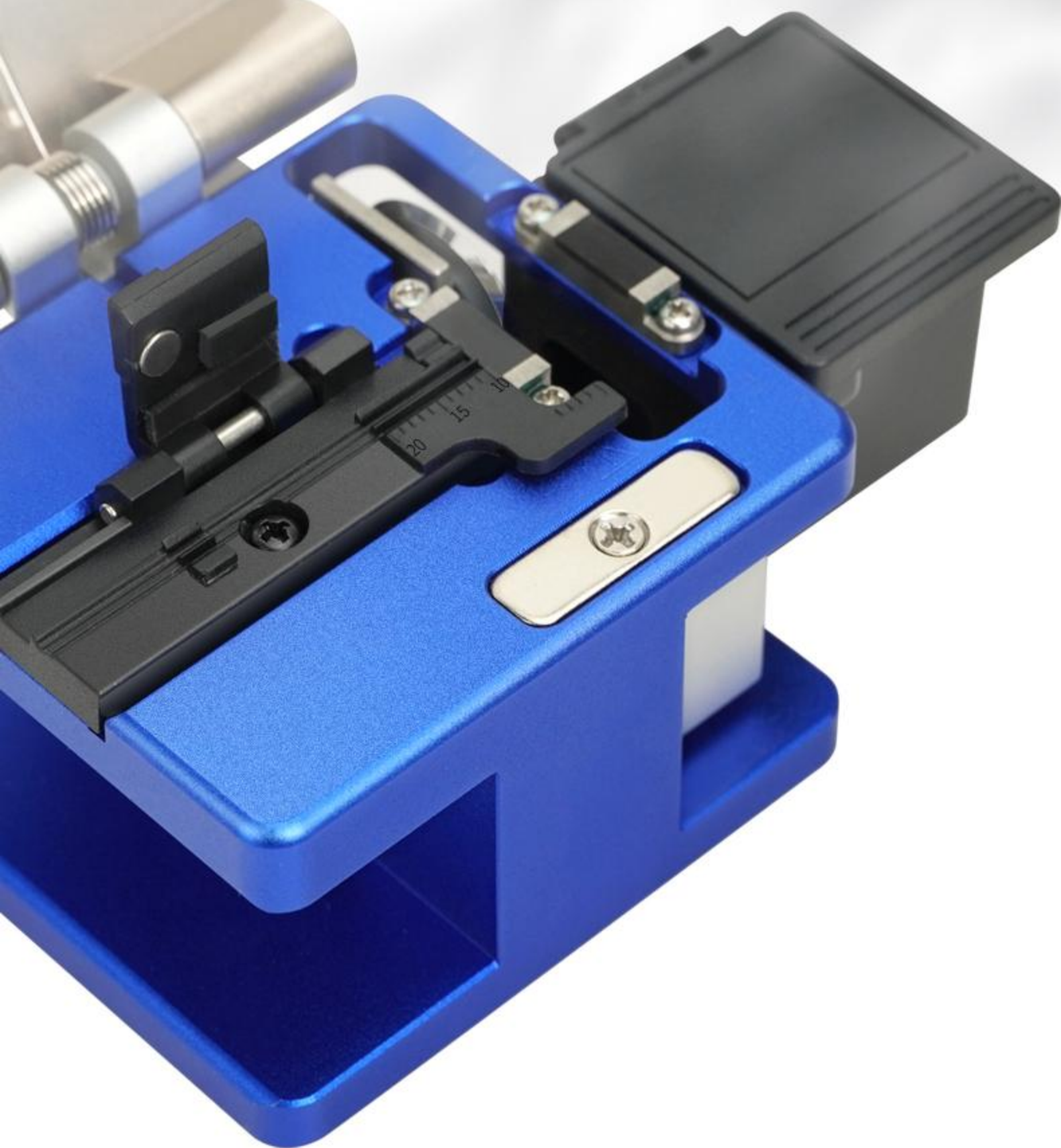


3 IN 1 FIXTURE

Three-in-one Fixture

No need to replace the fixture

Suitable for 3.0 leather wire/tail wire slot/0.9mm optical fiber slot
0.25mm bare fiber groove without changing fixture



TUNGSTEN STEEL BLADE

Tungsten Steel Blade

Sharp and Durable

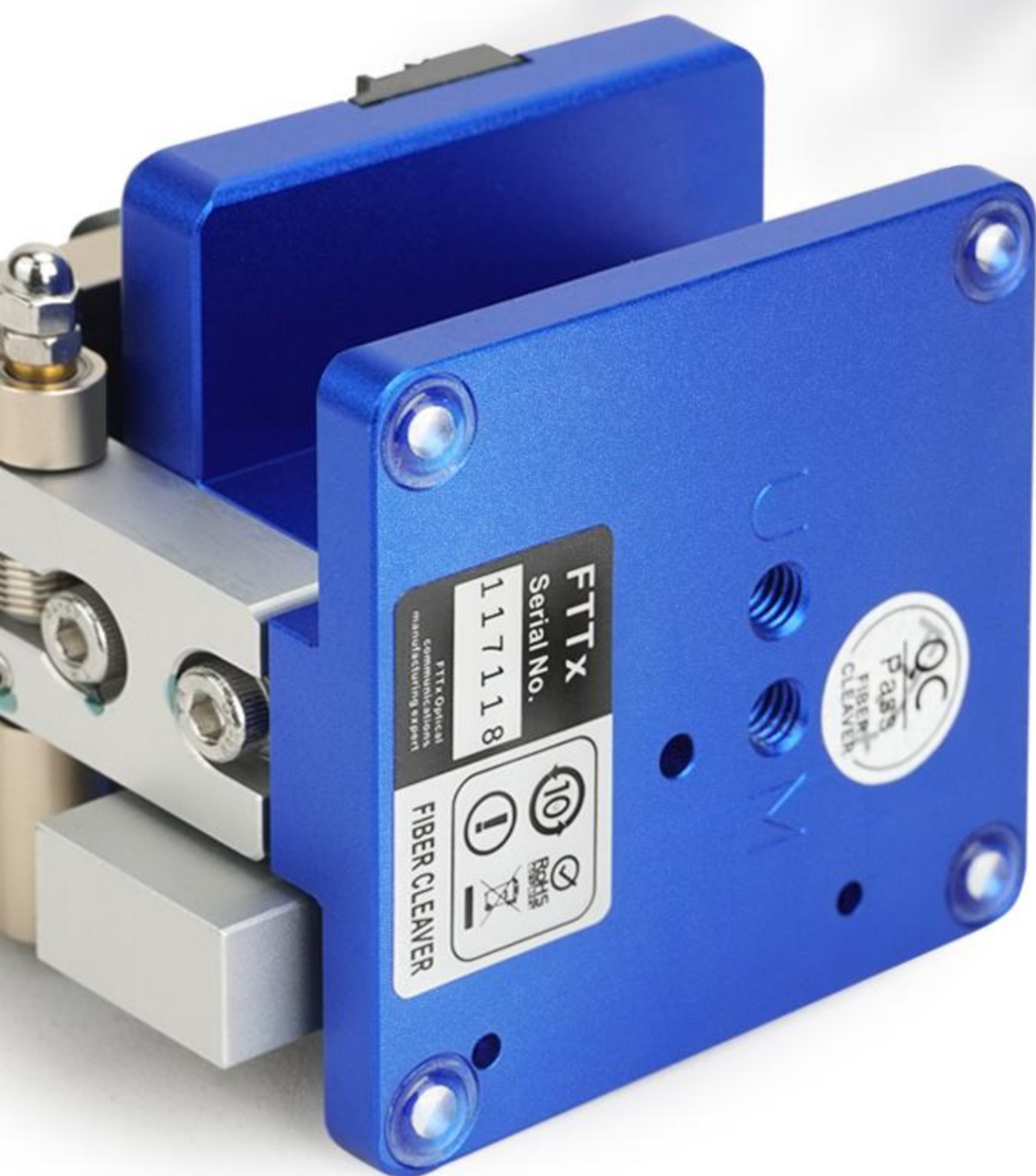
Tungsten steel is used as raw material, which can rotate 24 planes, cutting times are more than 36,000 times, and the average cutting angle is less than 0.5 degrees.



ANTISKID BASE

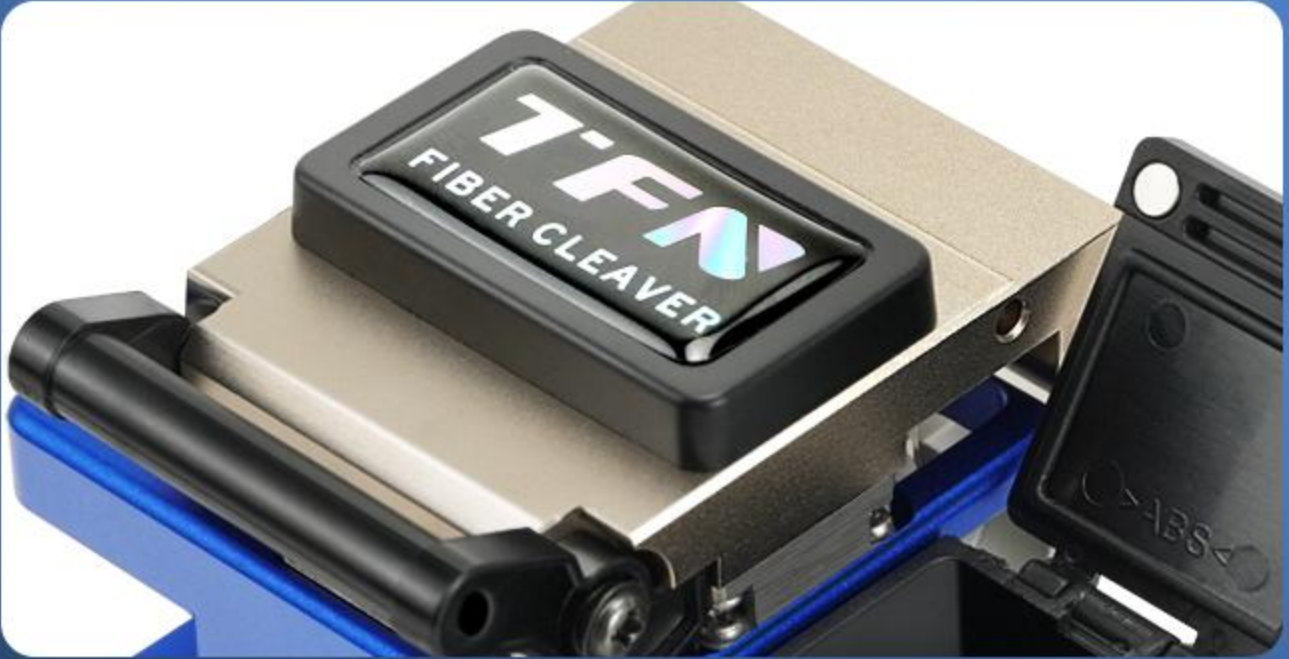
Non-slip Base

Fiber cutting is more stable



Product Details

PRODUCT DETAIL



Exquisite design, thick texture



Japanese IKO guide rail



Stable performance



Imported blade

T1 Black Model





Imported blade

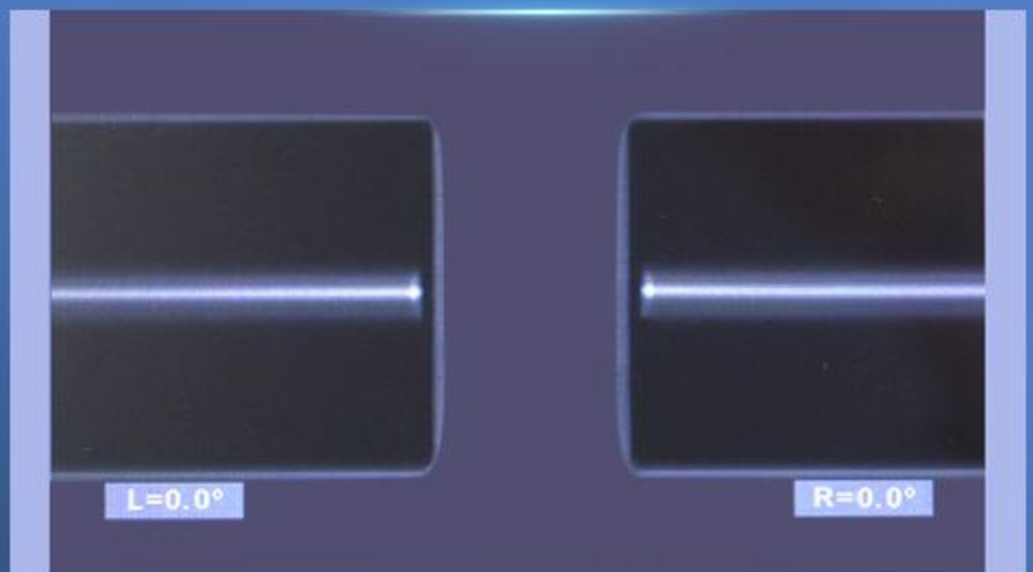


Three-in-one fixture

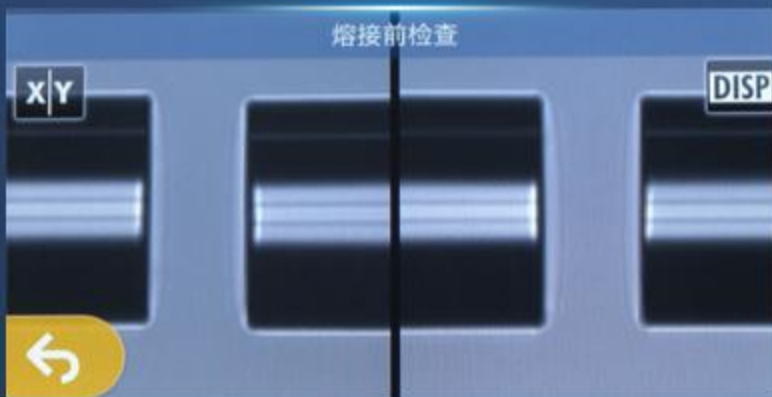
High Precision Cutting

Can withstand the test of fusing

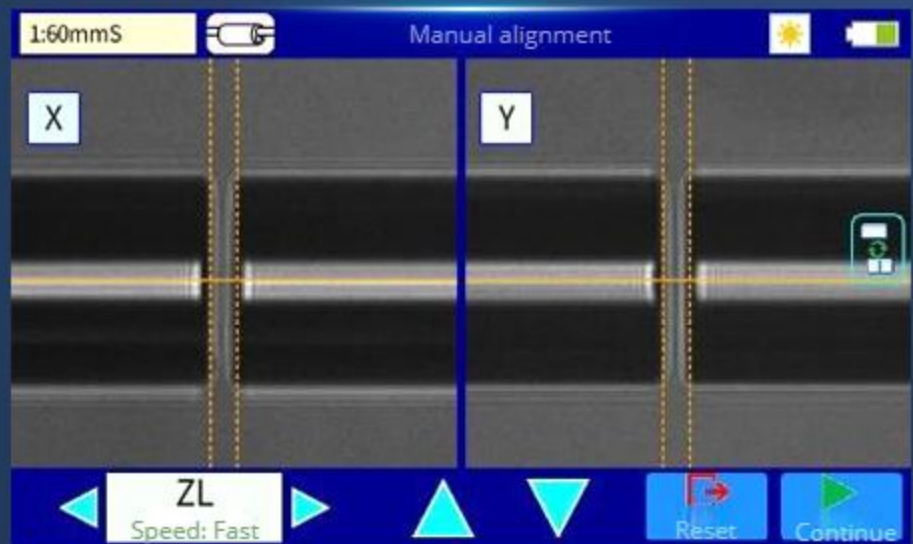
The cutting angle is less than 0.5° to ensure the working efficiency.



TFN FATE Series---Fusing machine end face display

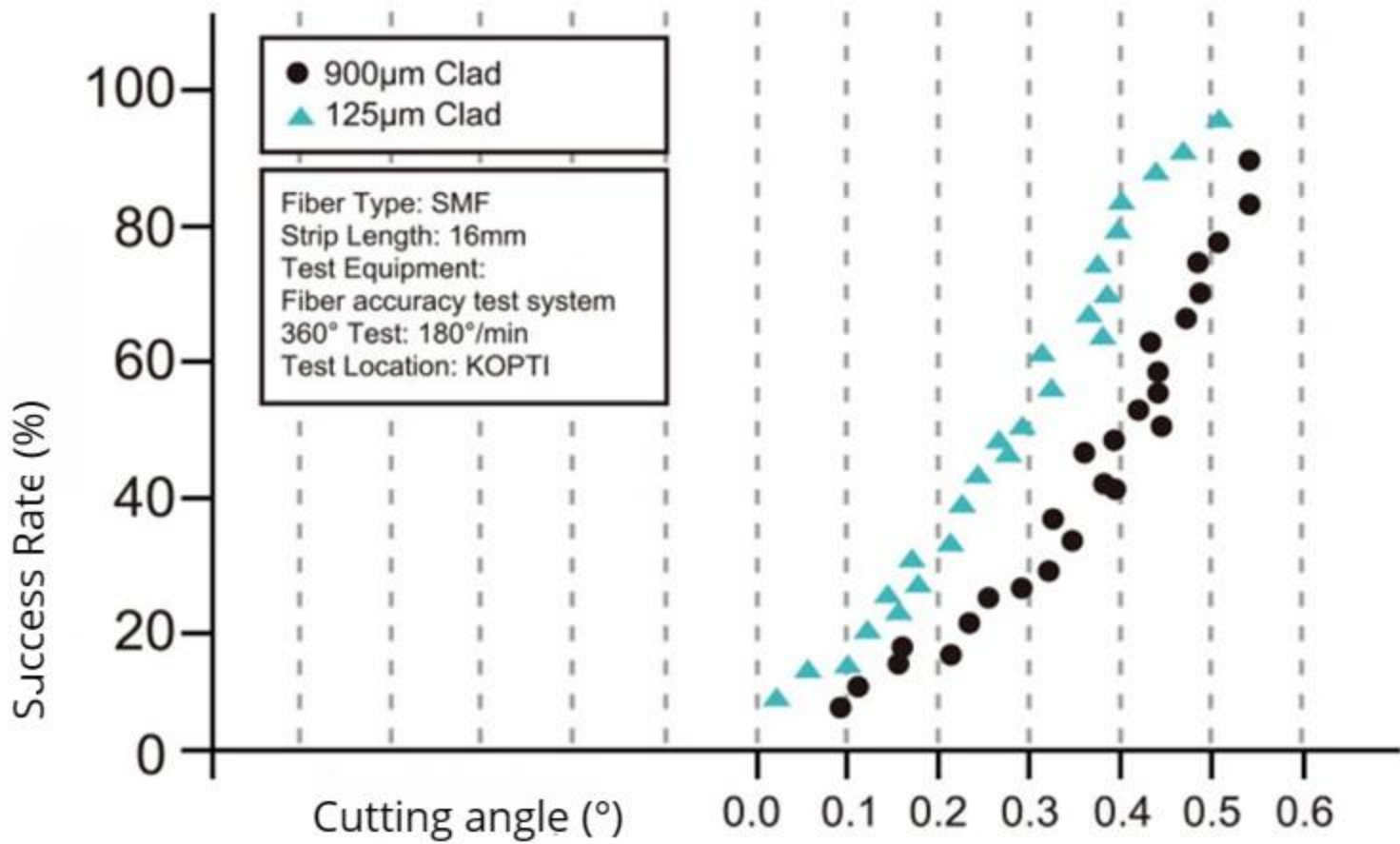
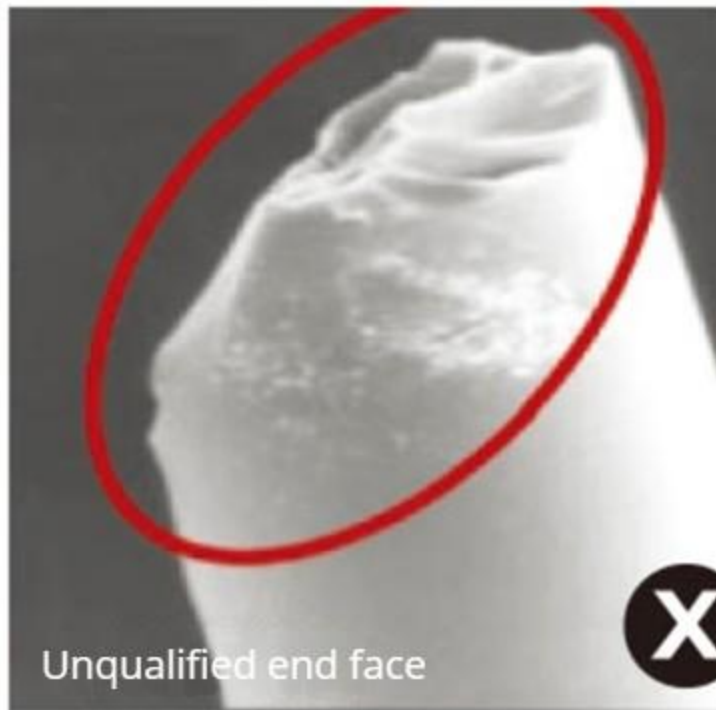
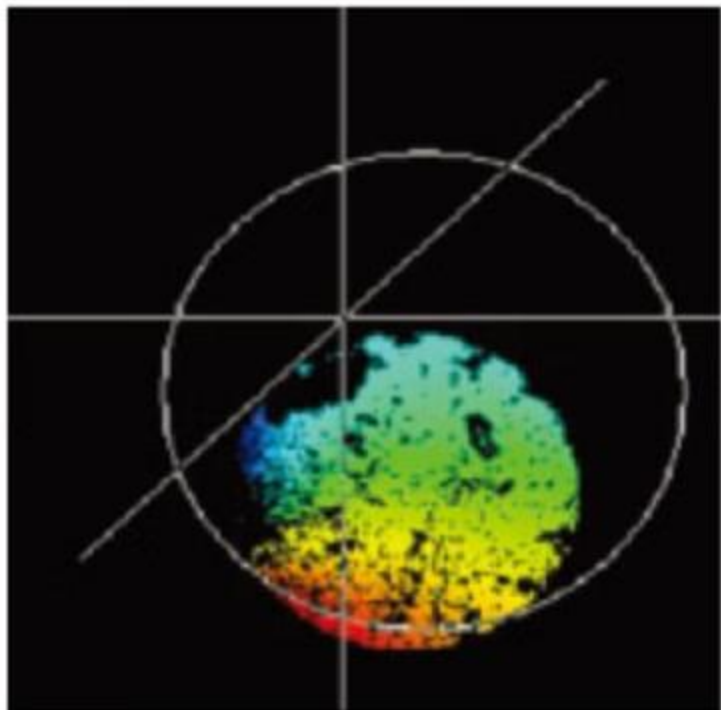
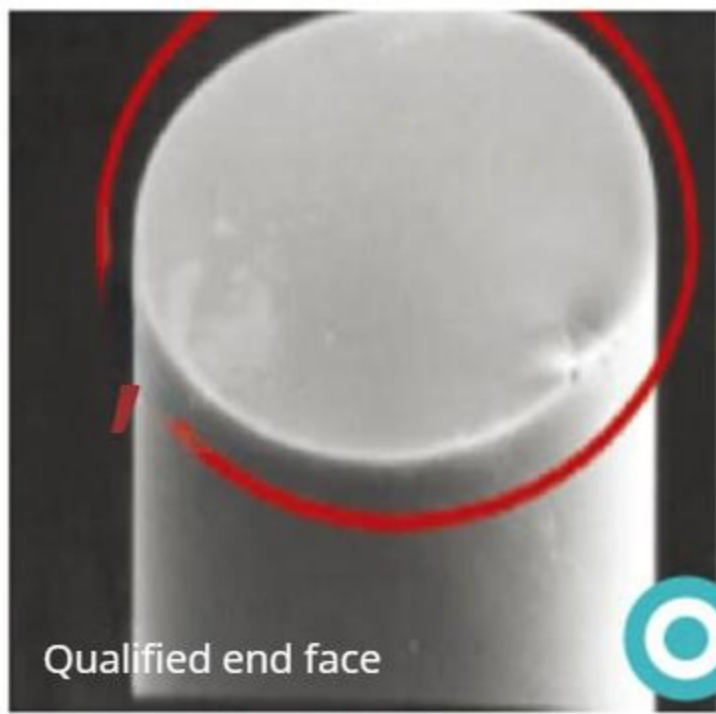
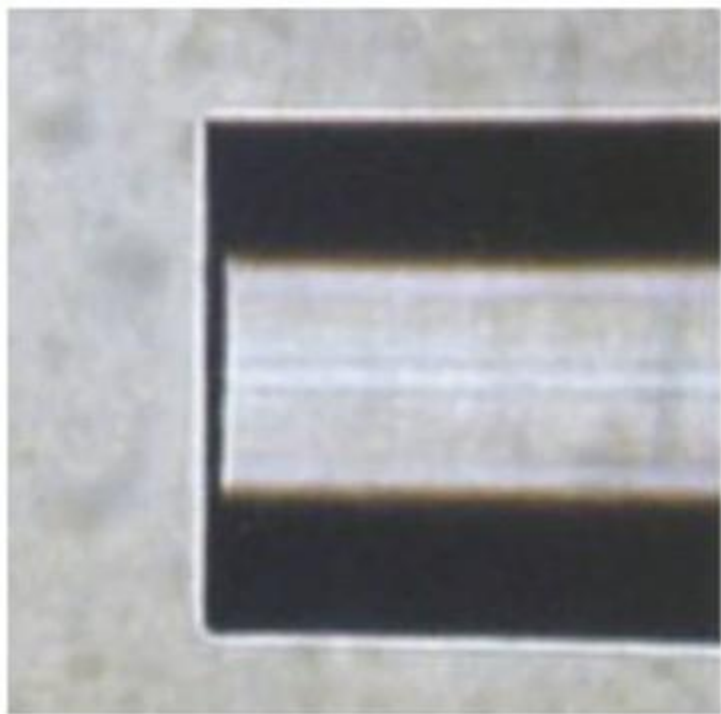


Japan Sumitomo---Fusing machine end face display

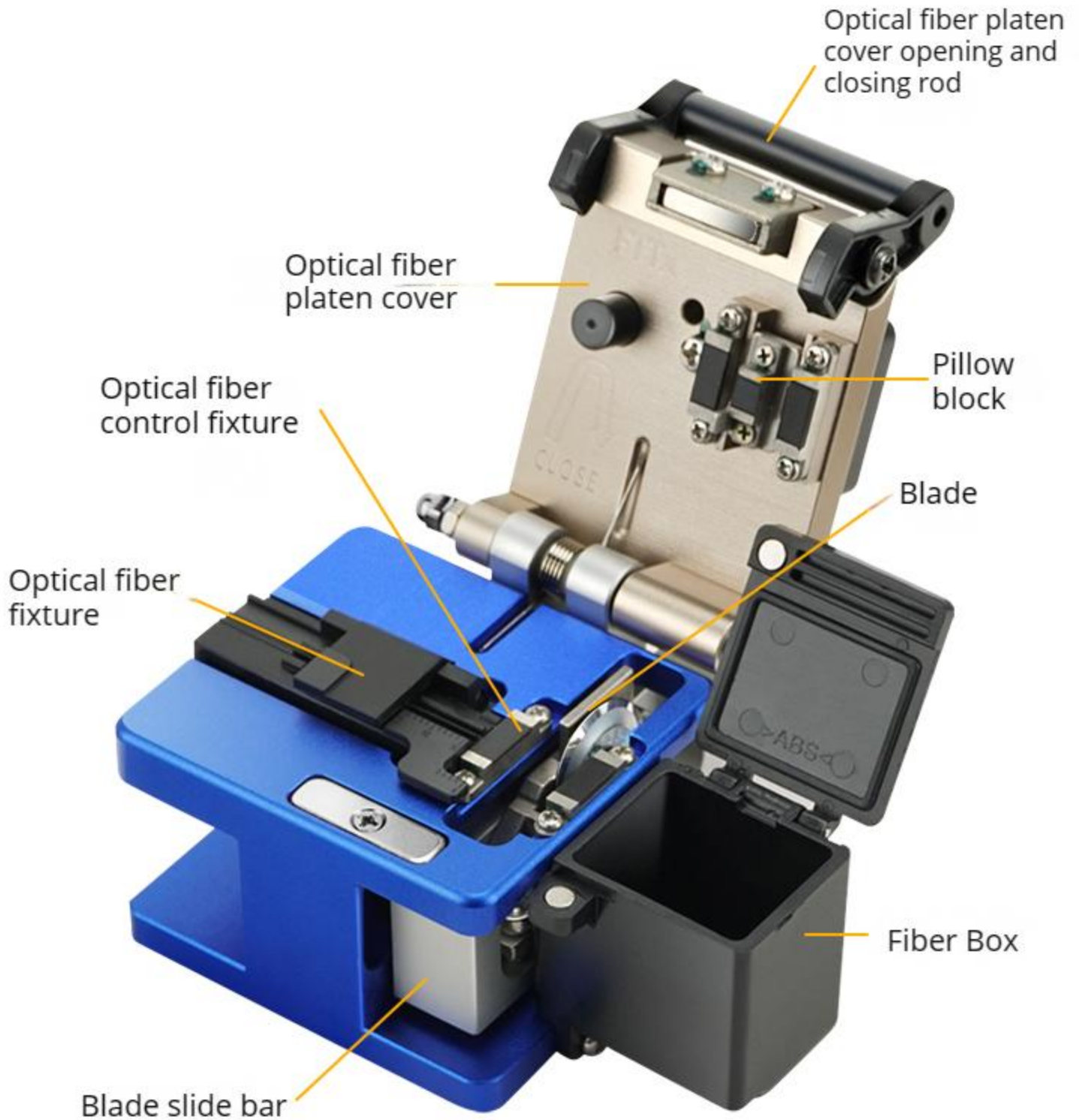


Japan Fujiakura---Fusing machine end face display

Test Analysis



Product Structure



Model	T1 (Single core & ribbon fiber cutting knife)
Appearance Size	63*75*62mm
Product Weight	359g
Cladding Diameter	125 μ m
Cutting Length	Single-core optical fiber: 8-20mm/ribbon fiber: 10mm
Suitable Optical Cable	Single-core optical cable: 250um, 900 μ m, 3.0mm, Indoor leather cable ribbon optical fiber: 2-12 core ribbon optical cable
Average Cutting Angle	Less than 0.5 degrees
Blade Life	Cut 1000 times to adjust the height once, each scale can adjust the height 3 times. A total of 24 faces, with a total life span of 36,000 times
Procedure	3 steps
Reset Function	Blade manual reset
Optical Fiber Fixture	Single-core optical fiber: universal optical fiber fixture/Ribbon fiber: replaceable ribbon fiber clamp

Product Display

